

# BEST EARRINGS COLLECTION

## ANTIQA HANDCRAFTED



**AntiqA**  
*Exclusively Handcrafted*

# EARRING STUDDED WITH TOP QUALITY CARVED AND CABOCHON AND MELLE DIAMOND

## PRODUCT DESCRIPTION

<b>STYLE:</b>	VE2276
<b>METAL:</b>	STERLING SILVER
<b>GROSS WT:</b>	15 GRAMS
<b>SIZE:</b>	5.6 x 2 cms width
<b>STONE WT:</b>	19.2 CARATS
<b>DIAMOND WT:</b>	2.25 CARATS





# EARRINGS STUDDED WITH RUBY, FRESH WATER PEARLS & MELLE DIAMONDS.

## PRODUCT DESCRIPTION

<b>STYLE:</b>	VE2289
<b>METAL:</b>	STERLING SILVER
<b>GROSS WT:</b>	21 GRAMS
<b>SIZE:</b>	11 x 2 cms
<b>STONE WT:</b>	65 CARATS
<b>POLKI WT:</b>	0.50 CARATS



# HANDCRAFTED BRACELET MADE WITH NATURAL BLUE SAPPHIRE & MELLE DIAMONDS

## PRODUCT DESCRIPTION

<b>STYLE:</b>	VB2287
<b>METAL:</b>	STERLING SILVER
<b>GROSS WT:</b>	14 GRAMS
<b>SIZE:</b>	1 cms width
<b>STONE WT:</b>	9.03 CARATS
<b>DIAMOND WT:</b>	0.70 CARATS





# EARRING STUDDED WITH ETHIOPIAN OPAL AND MELLE DIAMONDS

## PRODUCT DESCRIPTION

<b>STYLE:</b>	VE2274
<b>METAL:</b>	STERLING SILVER
<b>GROSS WT:</b>	15 GRAMS
<b>SIZE:</b>	6.5 x 3 cms
<b>STONE WT:</b>	6 CARATS
<b>DIAMOND WT:</b>	1.20 CARATS



# EARRING STUDDED WITH RAINBOW MOONSTONE AND MELLE DIAMONDS

## PRODUCT DESCRIPTION

<b>STYLE:</b>	VE2272
<b>METAL:</b>	STERLING SILVER
<b>GROSS WT:</b>	23 GRAMS
<b>SIZE:</b>	5.2 x 3 cms
<b>STONE WT:</b>	5.50 CARATS
<b>DIAMOND WT:</b>	2.8 CARATS



# EARRING STUDDED WITH BLUE SAPPHIRE, EMERALD AND MELLE

## PRODUCT DESCRIPTION

<b>STYLE:</b>	VE2279
<b>METAL:</b>	STERLING SILVER
<b>GROSS WT:</b>	14.7 GRAMS
<b>SIZE:</b>	5.6 x 2 cms
<b>STONE WT:</b>	14 CARATS
<b>DIAMOND WT:</b>	2.00 CARATS





# EARRINGS MADE WITH EXCLUSIVE TOP QUALITY RUBIES.

## PRODUCT DESCRIPTION

<b>STYLE:</b>	VE2270
<b>METAL:</b>	STERLING SILVER
<b>GROSS WT:</b>	18 GRAMS
<b>SIZE:</b>	4 x 3 cms
<b>STONE WT:</b>	14 CARATS
<b>DIAMOND WT:</b>	0.00 CARATS





# EARRING STUDDED WITH LEMON QUARTZ, RUBY AND MELLE DIAMONDS.

## PRODUCT DESCRIPTION

<b>STYLE:</b>	VE2269
<b>METAL:</b>	STERLING SILVER
<b>GROSS WT:</b>	10 GRAMS
<b>SIZE:</b>	4.2 x 1.7 cms
<b>STONE WT.</b>	12.93 CARATS
<b>POLKI DIAMOND WT:</b>	0.8 CARATS



# EARRING STUDDED WITH RUBY, OPAL AND MELLE DIAMONDS

## PRODUCT DESCRIPTION

<b>STYLE:</b>	VE2268
<b>METAL:</b>	STERLING SILVER
<b>GROSS WT:</b>	12 GRAMS
<b>SIZE</b>	4.8 x 2.8 cms
<b>STONE WT:</b>	14.5 CARATS
<b>DIAMOND WT:</b>	1.60 CARATS





# MUGHAL STYLE EARRING STUDDED WITH DOUBLET EMERALD AND MELLE DIAMOND

## PRODUCT DESCRIPTION

<b>STYLE:</b>	VE2266
<b>METAL:</b>	STERLING SILVER
<b>GROSS WT:</b>	24.5 GRAMS
<b>SIZE:</b>	4.8 x 1.9 cms
<b>STONE WT:</b>	39.5 CARATS
<b>DIAMOND WT:</b>	0.00 CARATS



# VINTAGE STYLE EARTOPS STUDDED WITH AMETHYST & OPALS.

## PRODUCT DESCRIPTION

<b>STYLE:</b>	VE2258
<b>METAL:</b>	STERLING SILVER
<b>GROSS WT:</b>	27.5 GRAMS
<b>SIZE:</b>	3 x 2.5 cms
<b>STONE WT:</b>	34 CARATS
<b>DIAMOND WT:</b>	0.00 CARATS





# EARRING STUDDED WITH BLUE SAPPHIRE CABOCHONS, EMERALD AND CHAMPAGNE DIAMONDS.

## PRODUCT DESCRIPTION

<b>STYLE:</b>	VE2217
<b>METAL:</b>	STERLING SILVER
<b>GROSS WT:</b>	16.5 GRAMS
<b>SIZE:</b>	5.3 x 3.2cms
<b>STONE WT:</b>	23.78 CARATS
<b>DIAMOND WT:</b>	1.25 CARATS



# EARRING STUDDED WITH AMETHYST, EMERALD & CHAMPAGNE DIAMONDS

## PRODUCT DESCRIPTION

<b>STYLE:</b>	VE2222
<b>METAL:</b>	STERLING SILVER
<b>GROSS WT:</b>	19 GRAMS
<b>SIZE:</b>	5.0 x 2.5cms
<b>STONE WT:</b>	18 CARATS
<b>DIAMOND WT:</b>	1.65 CARATS





# MUGHAL STYLE EARRING STUDDED WITH RUBY, POLKI AND DIAMONDS.

## PRODUCT DESCRIPTION

<b>STYLE:</b>	VE2157
<b>METAL:</b>	STERLING SILVER
<b>GROSS WT:</b>	15.5 GRAMS
<b>SIZE:</b>	4.5 x 2.5 cms
<b>STONE WT:</b>	8.5 CARATS
<b>DIAMOND WT:</b>	5.2 CARATS



# EARRING STUDDED WITH CARVED BLUE SAPPHIRE AND MELLE DIAMONDS

## PRODUCT DESCRIPTION

<b>STYLE:</b>	VB2084
<b>METAL:</b>	STERLING SILVER
<b>GROSS WT:</b>	18 GRAMS
<b>SIZE:</b>	6 x 2.5 cms
<b>STONE WT:</b>	20.65 CARATS
<b>DIAMOND WT:</b>	1.45 CARATS





# VICTORIAN EARRING STUDDED WITH CARVED RUBY AND OPALS

## PRODUCT DESCRIPTION

<b>STYLE:</b>	VB2253
<b>METAL:</b>	STERLING SILVER
<b>GROSS WT:</b>	27.5 GRAMS
<b>SIZE:</b>	3 x 2.5cms
<b>STONE WT:</b>	28 CARATS
<b>DIAMOND WT:</b>	0.00 CARATS



# EARRING STUDDED WITH ETHIOPIAN OPALS AND MELLE DIAMONDS

## PRODUCT DESCRIPTION

<b>STYLE:</b>	VE2254
<b>METAL:</b>	STERLING SILVER
<b>GROSS WT:</b>	19 GRAMS
<b>SIZE:</b>	8 x 3 cms
<b>STONE WT:</b>	34 CARATS
<b>DIAMOND WT:</b>	1.10 CARATS





# EARRING STUDDED WITH TANZANITE, RUBY, BLUE SAPPHIRE, POLKI AND MELLE DIAMONDS

## PRODUCT DESCRIPTION

<b>STYLE:</b>	VE2255
<b>METAL:</b>	STERLING SILVER
<b>GROSS WT:</b>	22 GRAMS
<b>SIZE:</b>	5.5 x 2.2 cm
<b>STONE WT:</b>	11.6 CARATS
<b>DIAMOND WT:</b>	1.7 CARATS



# EARRING STUDDED WITH TANZANITE AND ROSECUT DIAMONDS

## PRODUCT DESCRIPTION

<b>STYLE:</b>	VE2257
<b>METAL:</b>	STERLING SILVER
<b>GROSS WT:</b>	13.10 GRAMS
<b>SIZE:</b>	6.7 x 2.3 cms
<b>STONE WT:</b>	4.10 CARATS
<b>DIAMOND WT:</b>	2.01 CARATS





# VINTAGE STYLE EARRINGS STUDDED WITH TANZANITE & MELLE DIAMONDS.

## PRODUCT DESCRIPTION

<b>STYLE:</b>	VE2259
<b>METAL:</b>	STERLING SILVER
<b>GROSS WT:</b>	13 GRAMS
<b>SIZE:</b>	5.5 x 2.3 cms
<b>STONE WT:</b>	10 CARATS
<b>DIAMOND WT:</b>	3.85 CARATS



# MUGHAL STYLE EARRING STUDDED WITH CARVED BLUE SAPPHIRE, EMERALD AND DIAMONDS

## PRODUCT DESCRIPTION

<b>STYLE:</b>	VE2216
<b>METAL:</b>	STERLING SILVER
<b>GROSS WT:</b>	13 GRAMS
<b>SIZE:</b>	5 x 2.4 cms
<b>STONE WT:</b>	15 CARATS
<b>DIAMOND WT:</b>	1.30 CARATS





# MUGHAL STYLE EARRINGS STUDDED WITH POLKI AND DIAMONDS

## PRODUCT DESCRIPTION

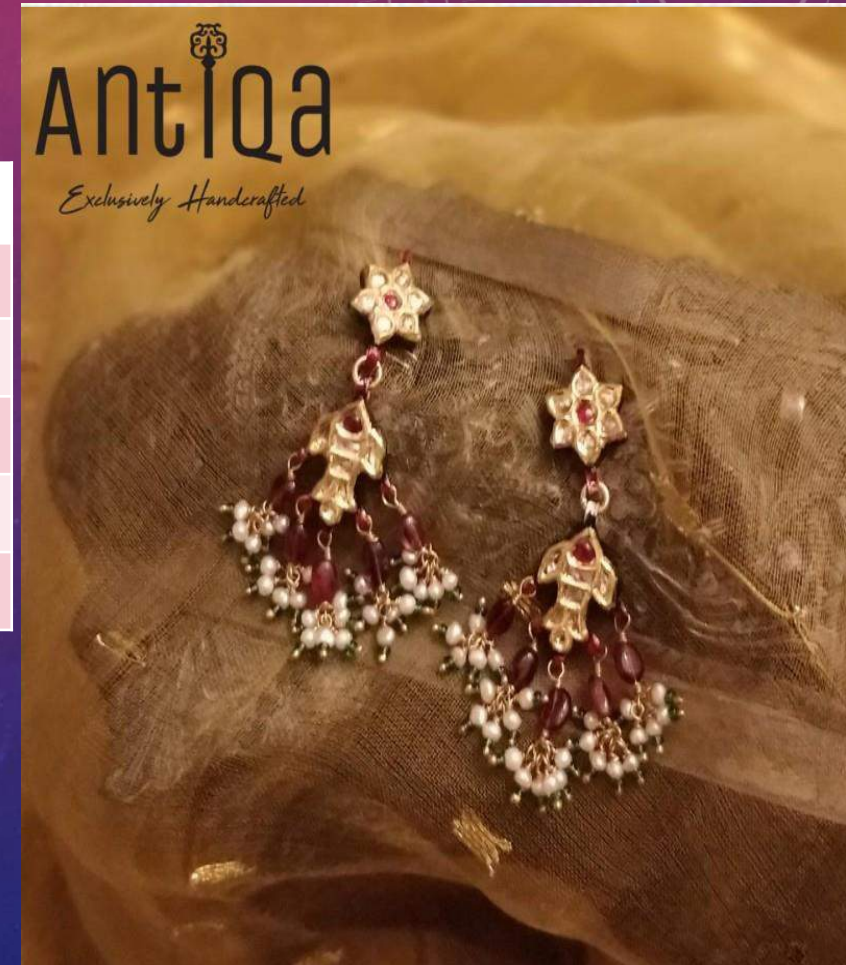
<b>STYLE:</b>	VE2214
<b>METAL:</b>	STERLING SILVER
<b>GROSS WT:</b>	13 GRAMS
<b>SIZE:</b>	3.4 x 1.5 cms
<b>DIAMOND WT:</b>	2.10 CARATS



MUGHAL STYLE STUDDED WITH RUBY, FRESHWATER PEARLS AND POLKI DIAMONDS.  
THE STONES AND POLKI ARE SET IN 24KGOLD KUNDAN

## PRODUCT DESCRIPTION

<b>STYLE:</b>	VE2212
<b>METAL:</b>	STERLING SILVER
<b>GROSS WT:</b>	7 GRAMS
<b>SIZE:</b>	5 x 2 cms
<b>STONE WT:</b>	9.50 CARATS
<b>DIAMOND WT:</b>	0.60 CARATS





# EARRING STUDDED WITH KYANITE BLUE AND DIAMONDS

## PRODUCT DESCRIPTION

<b>STYLE:</b>	VE2170
<b>METAL:</b>	STERLING SILVER
<b>GROSS WT:</b>	19 GRAMS
<b>SIZE:</b>	6.0 x 3.5 cms
<b>STONE WT:</b>	19 CARATS
<b>DIAMOND WT:</b>	4.50 CARATS



# MUGHAL STYLE EARRINGS STUDDED WITH TOURMALINES AND DIAMONDS

## PRODUCT DESCRIPTION

<b>STYLE:</b>	VE2168
<b>METAL:</b>	STERLING SILVER
<b>GROSS WT:</b>	16 GRAMS
<b>SIZE:</b>	6.5 x 2.5 cms
<b>STONE WT:</b>	14 CARATS
<b>DIAMOND WT:</b>	3.10 CARATS



**Antiqua**  
*Exclusively Handcrafted*



# ABOUT US!

A Collection as unique as

**You!**



ANTIQA IS AN INITIATIVE OF MRS. BEENU KATHURIA TO BRING THE MODERN LOOKING ANTIQUE JEWELRY AT YOUR DOORSTEP AT SUCH PRICE THAT WON'T HURT YOUR POCKET OR BREAK YOUR BUDGET. THE EXPERT TEAM CRAFTSMEN AT OUR WORKSTATION WORK WITH THEIR EXPERTISE AND DEDICATION FOR EACH AND EVERY PIECE OF JEWELRY. ALL OUR JEWELRY PRODUCTS ARE WELL DESIGNED AND HAVE A DECENT FINISHING THAT MAKES THEM A PREMIUM LOOK. THE THING THAT MAKES THE JEWELRY OF ANTIQA, A BIT CLASSY THAN OTHER ONLINE RETAIL STORES IS, ALL OUR DESIGNS ARE EXCLUSIVELY HANDCRAFTED AND FROM OUR EXPERTS. IT MEANS WE DON'T USE MACHINES TO MAKE THE REPLICATIONS OF JEWELRY INSTEAD OF THAT, OUR PIECES OF JEWELRY ARE HANDCRAFTED AND DEvised BY HUMANS. WE BELIEVE IN CREATING MASTERPIECES AND WORK DAY AND NIGHT WITH DEVOTION AND HARD-WORK TO MAKE THE PIECES OF JEWELRY THAT CAN ADORN YOU WITH ELEGANCE AND DIGNITY. CHECK OUT OUR LATEST COLLECTION OF HANDCRAFTED JEWELRY AND SEE THE DIFFERENCE.

Antiqua  
*Exclusively Handcrafted*

# CONTACT US



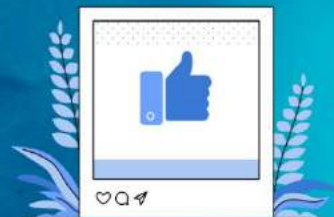
## CONTACT US

52, 3RD FLOOR SOUTH PATEL NAGAR NEW DELHI-110008  
INDIA

PHONE - +919811217464

EMAIL-ANTIQA699@GMAIL.COM

WEBSITE-<https://www.antiqua.in>

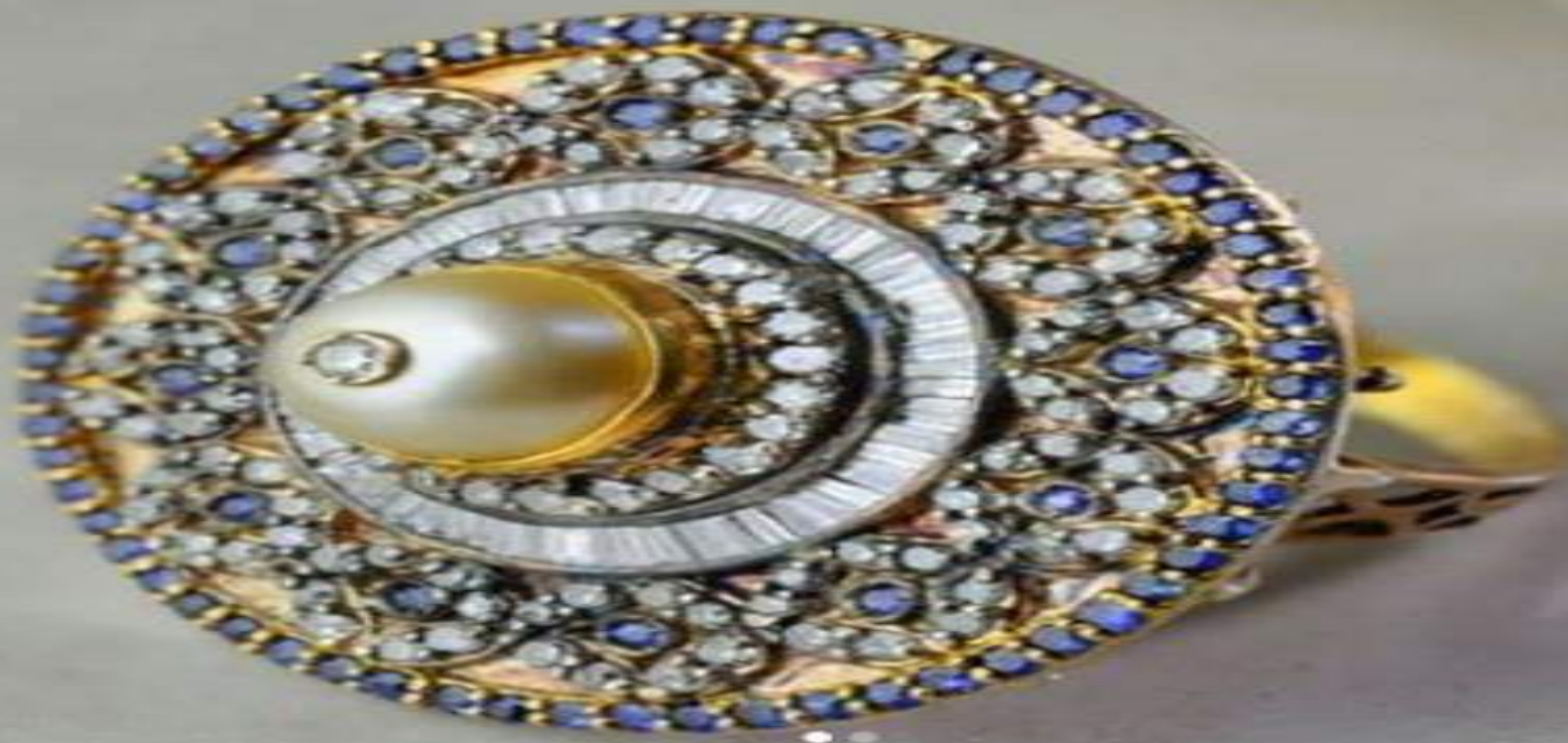




# VICTORIAN RINGS

## ANTIQA HANDCRAFTED

Antiqua  
*Exclusively Handcrafted*



# VICTORIAN RING

- Victorian Rings are something they express the feelings and emotions of every occasion whether we are talking about engagements or you are going to propose your loved one. We believe that rings always add an essence of sentiments that is why we have brought you the modern collection of antique handcrafted rings direct from our workshop to your doorstep. We never disappoint you on quality or style as all our rings are specially crafted from experts and having a finish that reflects classiness. Have a look at our latest collection and choose your favorite one.
- The style of the Victorian rings was clearly defined as that carried out during the reign of Queen Victoria between 1837 and 1900, with pieces from that period clearly showing the royal affection between her and Prince Albert. The Victorian period was the first era when the monarch had such an influence on jewelry styles and his affection for diamonds led to its widespread use as a cornerstone for rings. Three different moments can be seen during the Victorian period: the romantic, the grand, and the aesthetic, each accompanied by their own styles and trends. One thing which is important to understand about the history of Victorian rings, however, is that there was two very key changes to both the metals used in jewelry and the gemstones used which occurred during these years. The first of these was the development of lower carat gold alloys, making jewelry more affordable and widely available. Prior to 1854, the majority of fine jewelry was made using either 22 or 18-carat gold, however, the Victorian era brought about the widespread use of 15, 12, and even 9-carat gold alloys. The second key change during the period was the opening of diamond mines in South Africa which saw large individual diamonds come to the market and become popular in both engagement and wedding rings.
- As you know, there were many interesting and different eras in jewelry spanning decades, centuries. And although the periods sometimes overlap, the following is a widely accepted breakdown of the historical era. Let's fly through them! This style was primarily seen in the decorative arts during the Victorian era when Queen Victoria ruled. The Victorian era is known for its versatile renovation and interpretation of historical styles, but also for the intercultural influences of the Middle East and Asia. Jewelry from this period can be recognized by working with yellow rose gold, the use of seed beads, colored gemstones or paste, and the use of commemorative jewelry. In general, these are vintage jewelry when a piece was made before 1980. You'll see yellow or brushed gold for the 1960s, colored stones on larger cocktail rings in the 1950s, and large ear clips (for example, the "door knocker" model) in the 1970s. Also, colored cabochon-cut stones and geometric brooches were widespread.
- Here at Antiqua Handcrafted Jewelry, we are proud to offer a beautiful range of Victorian rings, all of which have been hand-picked by our team. Whether you're looking for an engagement ring, a wedding ring, or simply a special treat, we're on hand to offer the perfect ring as well as to offer guidance and share our knowledge on each and every piece.



# 1. HANDCRAFTED RING STUDDED WITH SQUARE BLUE TOPAZ, RUBY AND DIAMONDS.

## PRODUCT DESCRIPTION

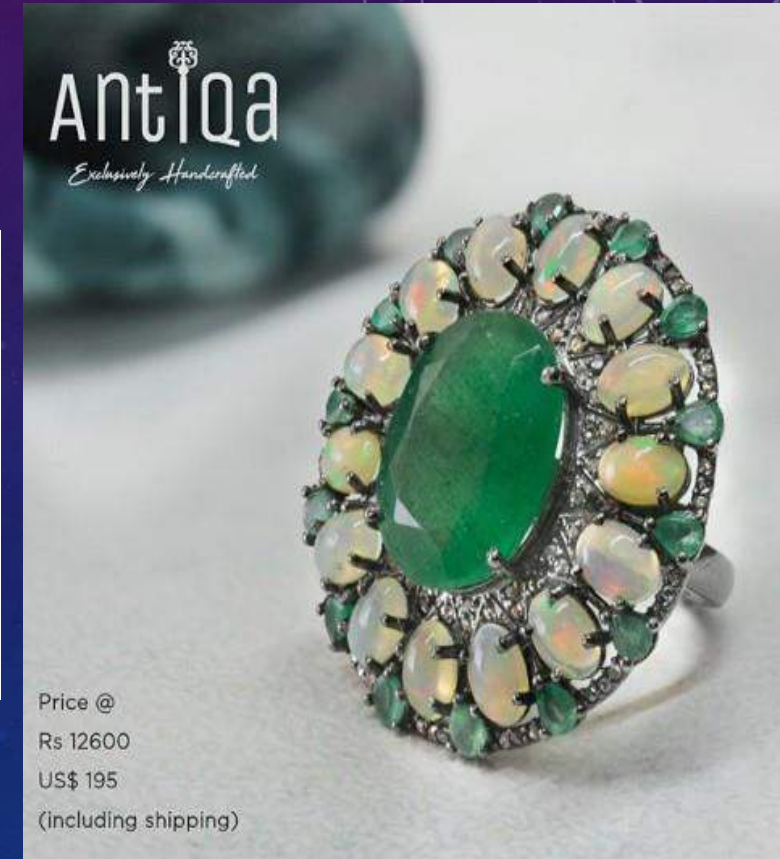
<b>STYLE</b>	<b>VR2098</b>
METAL	STERLING SILVER-925
GROSS WT.	9 GRAM
STONE WT.	9 CARAT
DIAMOND WT.	0.61 CARAT
SIZE	1.5 x 1.5 CMS



## 2. MUGHAL STYLE HANDCRAFTED RING STUDDED WITH CARVED LARGE EMERALD, ETHIOPIAN OPALS AND DIAMONDS.

### PRODUCT DESCRIPTION

<b>STYLE</b>	<b>VR2095</b>
METAL	STERLING SILVER-925
GROSS WT.	12.50 GRAM
STONE WT.	21 CARAT
DIAMOND WT.	0.45 CARAT
SIZE	3.5 x 3 CMS

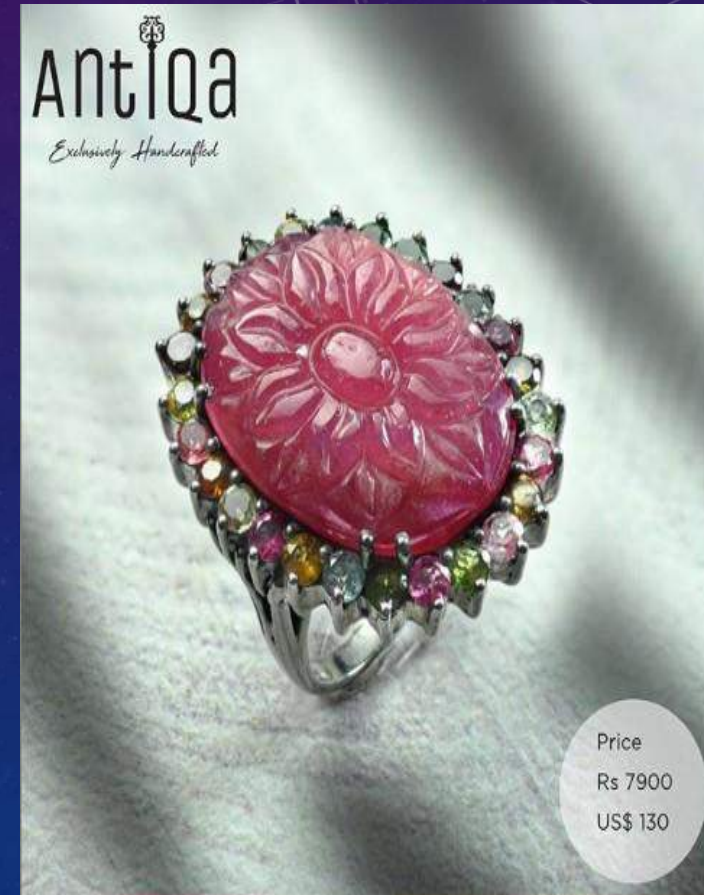




# 3. VICTORIAN STYLE HANDCRAFTED CARVED RUBIES AND MULTI TOURMALINE.

## PRODUCT DESCRIPTION

<b>STYLE</b>	<b>VR2086</b>
METAL	STERLING SILVER-925
GROSS WT.	16.50 GRAM
STONE WT.	21 CARAT
SIZE	3.0 x 2.5 cms



3. HANDCRAFTED RING WITH A LARGE OVAL NATURAL TURQUOISE CABOCHON SET IN THE MIDST OF SHINING RUBIES AND CHAMPAGNE DIAMONDS.

## PRODUCT DESCRIPTION

<b>STYLE</b>	<b>VR1966</b>
METAL	STERLING SILVER-925
GROSS WT.	9.10 GRAM
STONE WT.	5.25 CARAT
DIAMOND WT.	0.90 CARAT
SIZE	2.3 CMS DIAMETER





# 5. HANDCRAFTED FLOWER STYLE RING WITH OVAL BLUE TOPAZ STONE IN THE MIDDLE OF BEAUTIFULLY SET DIAMONDS AND MARQUISE SHAPED RUBIES

## PRODUCT DESCRIPTION



**AntiqA**  
*Exclusively Handcrafted*

<b>STYLE</b>	<b>VR1777</b>
<b>METAL</b>	STERLING SILVER-925
<b>GROSS WT.</b>	8.50 GRAM
<b>STONE WT.</b>	9.59 CARAT
<b>DIAMOND WT.</b>	1.14 CARAT
<b>SIZE</b>	3.0 x 2.5 CMS

# ABOUT US!

A Collection as unique as  
**You!**



ANTIQA IS AN INITIATIVE OF MRS. BEENU KATHURIA TO BRING THE MODERN LOOKING ANTIQUE JEWELRY AT YOUR DOORSTEP AT SUCH PRICE THAT WON'T HURT YOUR POCKET OR BREAK YOUR BUDGET. THE EXPERT TEAM CRAFTSMEN AT OR WORKSTATION WORK WITH THEIR EXPERTISE AND DEDICATION FOR EACH AND EVERY PIECE OF JEWELRY. ALL OUR JEWELRY PRODUCTS ARE WELL DESIGNED AND HAVE A DECENT FINISHING THAT MAKES THEM A PREMIUM LOOK. THE THING THAT MAKES THE JEWELRY OF ANTIQA, A BIT CLASSY THAT OTHER ONLINE RETAIL STORES IS, ALL OUR DESIGNS ARE EXCLUSIVELY HANDCRAFTED AND FROM OUR EXPERTS. IT MEANS WE DON'T USE MACHINES TO MAKE THE REPLICATIONS OF JEWELRY INSTEAD OF THAT, OUR PIECES OF JEWELRY ARE HANDCRAFTED AND DEVISED BY HUMANS. WE BELIEVE IN CREATING MASTERPIECES AND WORK DAY AND NIGHT WITH DEVOTION AND HARD-WORK TO MAKE THE PIECES OF JEWELRY THAT CAN ADORN YOU WITH ELEGANCE AND DIGNITY. CHECK OUT OUR LATEST COLLECTION OF HANDCRAFTED JEWELRY AND SEE THE DIFFERENCE.



# CONTACT US

CONTACT US



## Contact Us

52 3<sup>rd</sup> floor South Patel Nagar

New Delhi – 55

INDIA

Phone- +91 9811217464

Email- [Antiqua699@gmail.com](mailto:Antiqua699@gmail.com)

# BEST NECKLACES COLLECTION

## ANTIQA HANDCRAFTED





# BEADS OF RUBY, PINK SAPPHIRE, BLUE SAPPHIRE & EMERALD

## PRODUCT DESCRIPTION

<b>STYLE:</b>	VN2223
<b>METAL:</b>	STERLING SILVER
<b>GROSS WT:</b>	81 GRAMS
<b>SIZE:</b>	Maximum 49 cms & Minimum 40 cms
<b>STONE WT:</b>	404 CARATS
<b>DIAMOND WT:</b>	0.00 CARATS



# CHOCKER NECKLACE STUDDED WITH TOP QUALITY RUBIES, POLKI AND PEARLS.

## PRODUCT DESCRIPTION

<b>STYLE:</b>	VN2161
<b>METAL:</b>	STERLING SILVER
<b>GROSS WT:</b>	60 GRAMS
<b>SIZE:</b>	1 CMS Width
<b>STONE WT:</b>	97 CARATS
<b>POLKI WT:</b>	1.60 CARATS





# MUGHAL STYLE EMERALD DOUBLET CHOCKER NECKLACE AND EARRINGS SET STUDDED WITH POLKI & DIAMONDS.

## PRODUCT DESCRIPTION

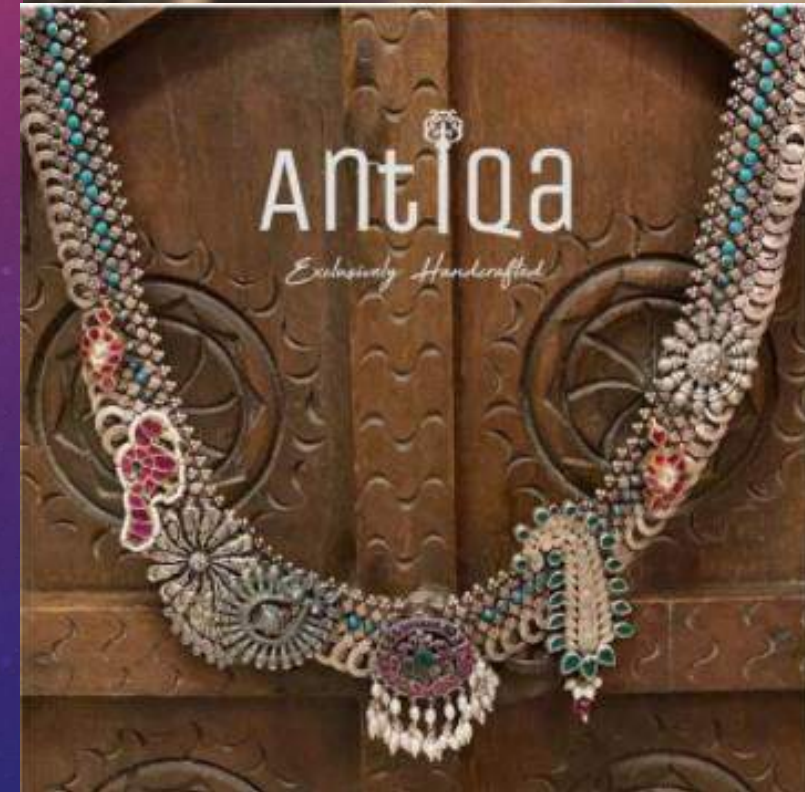
<b>STYLE:</b>	VN2156
<b>METAL:</b>	STERLING SILVER
<b>GROSS WT:</b>	66 GRAMS
<b>SIZE:</b>	5 x 14 cms length
<b>STONE WT:</b>	43 CARATS
<b>DIAMOND WT:</b>	6.8 CARATS



# GRACEFULLY DESIGNED NECKLACE MADE WITH RUBY TURQUOISE PEARLS AND GREENONYX

## PRODUCT DESCRIPTION

<b>STYLE:</b>	VN2146
<b>METAL:</b>	STERLING SILVER
<b>GROSS WT:</b>	228 GRAMS
<b>SIZE:</b>	45 cms length x 8 cms width
<b>STONE WT:</b>	50 CARATS
<b>DIAMOND WT:</b>	0.00 CARATS





# RUBY NECKLACE AND EARRINGS SET STUDDED WITH MELLE DIAMONDS

## PRODUCT DESCRIPTION

<b>STYLE:</b>	VN2153
<b>METAL:</b>	STERLING SILVER
<b>GROSS WT:</b>	43 GRAMS
<b>SIZE:</b>	5.5 x 45 cms length
<b>STONE WT:</b>	36 CARATS
<b>DIAMOND WT:</b>	2.60 CARATS



# VICTORIAN NECKLACE STUDDED WITH RUBELLITE AND DIAMONDS. RUBELLITE ARE TOP QUALITY DARK PINK TOURMALINE STONES

## PRODUCT DESCRIPTION

<b>STYLE:</b>	VN2108
<b>METAL:</b>	STERLING SILVER
<b>GROSS WT:</b>	53 GRAMS
<b>SIZE:</b>	40 cms length x 7 cms width
<b>STONE WT:</b>	21 CARATS
<b>DIAMOND WT:</b>	5.50 CARATS

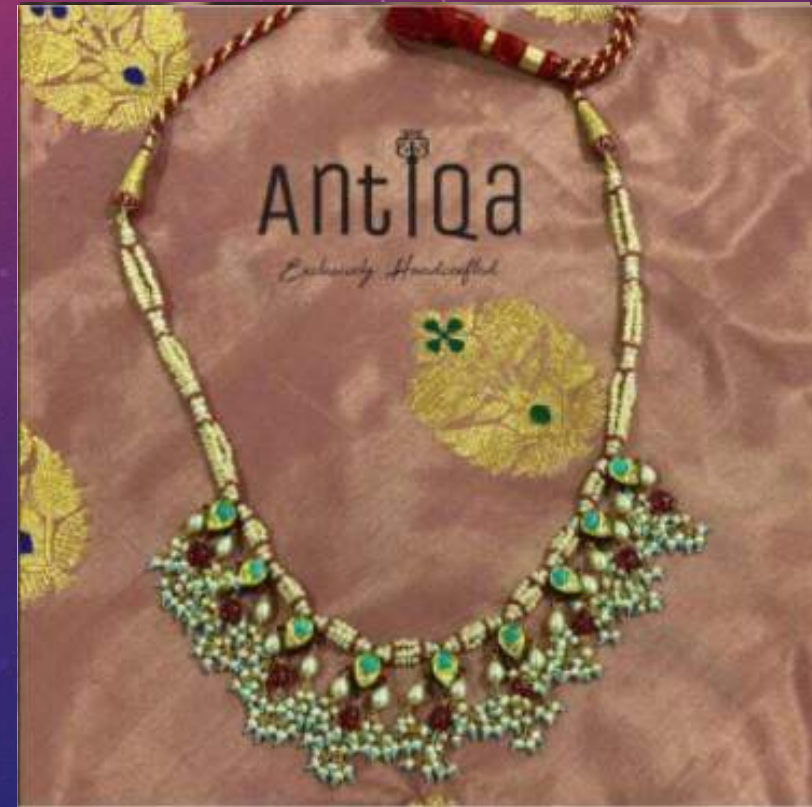




# MUGHAL KUNDAN STYLE NECKLACE STUDDED WITH TURQUOISE, RUBIES, WHITE SAPPHIRE & FRESHWATER PEARLS

## PRODUCT DESCRIPTION

<b>STYLE:</b>	VN2142
<b>METAL:</b>	STERLING SILVER
<b>GROSS WT:</b>	31 GRAMS
<b>SIZE:</b>	4 cm wide x 40cms length (adjustable)
<b>STONE WT:</b>	12 CARATS
<b>DIAMOND WT:</b>	0.35 CARATS



# NECKLACE IN MUGHAL STYLE MADE WITH GOLD, KUNDAN, NATURAL POLKI & FRESHWATER PEARLS.

## PRODUCT DESCRIPTION

<b>STYLE:</b>	VN2140
<b>METAL:</b>	STERLING SILVER
<b>GROSS WT:</b>	151 GRAMS
<b>SIZE:</b>	7 cm wide x 48 cms length
<b>GOLD KUNDAN WEIGHT</b>	5.680 GRAMS
<b>POLKI DIAMOND WT:</b>	9.90 CARATS





# VICTORIAN NECKLACE STUDDED WITH SAPPHIRE IN DIFFERENT SHADES OF BLUE, RED, PINK, GREY & IVORY

## PRODUCT DESCRIPTION

<b>STYLE:</b>	VN2134
<b>METAL:</b>	STERLING SILVER
<b>GROSS WT:</b>	39 GRAMS
<b>STONE WT:</b>	195 CARATS
<b>DIAMOND WT:</b>	0.00 CARATS



# MUGHAL STYLE NECKLACE MADE WITH GREEN BERYL BEADS & POLKI

## PRODUCT DESCRIPTION

<b>STYLE:</b>	VN2094
<b>METAL:</b>	STERLING SILVER
<b>GROSS WT:</b>	72 GRAMS
<b>SIZE:</b>	2 cm wide x 46 cms length
<b>STONE WT:</b>	4.90 CARATS
<b>DIAMOND WT:</b>	0.80 CARATS





# HANDCRAFTED EXTREMELY BEAUTIFUL MUGHAL STYLE NECKLACE MADE RUBIES

## PRODUCT DESCRIPTION

<b>STYLE:</b>	VN2060
<b>METAL:</b>	STERLING SILVER
<b>GROSS WT:</b>	17 GRAMS
<b>SIZE:</b>	6.5 X 1.1 CMS WIDTH
<b>STONE WT:</b>	7.31 CARATS
<b>DIAMOND WT:</b>	1.57 CARATS



# NECKLACE MADE WITH DEEP BLUE RANDOM SHAPE BLUE SAPPHIRE, AUSTRALIAN OPALS AND DIAMONDS.

## PRODUCT DESCRIPTION

<b>STYLE:</b>	VN1933
<b>METAL:</b>	STERLING SILVER
<b>GROSS WT:</b>	63 GRAMS
<b>SIZE:</b>	69 cm length x 2 cms width
<b>STONE WT:</b>	89.5 CARATS
<b>DIAMOND WT:</b>	8.40 CARATS





# MUGHAL STYLE NECKLACE & EARRINGS SET

## PRODUCT DESCRIPTION

<b>STYLE:</b>	VN1936
<b>METAL:</b>	STERLING SILVER
<b>GROSS WT:</b>	109 GRAMS
<b>SIZE:</b>	46 cm length 2.5 cms width
<b>STONE WT:</b>	16 CARATS
<b>DIAMOND WT:</b>	0.00 CARATS



# CLASSIC POLKI STUDDED LONG NECKLACE WITH ENAMEL WORK

## PRODUCT DESCRIPTION

<b>STYLE:</b>	VN1978
<b>METAL:</b>	STERLING SILVER
<b>GROSS WT:</b>	83.50 GRAMS
<b>SIZE:</b>	60 cm length x 0.8 cm wide
<b>STONE WT:</b>	15.50 CARATS
<b>DIAMOND WT:</b>	0.00 CARATS





# NECKLACE & EARRINGS SET MADE WITH CITRINE, RUBY, KYANITE AND DIAMONDS/ STYLISH NECKLACE FOR WOMEN AND GIRLS

## PRODUCT DESCRIPTION

<b>STYLE:</b>	VN2006
<b>METAL:</b>	STERLING SILVER
<b>GROSS WT:</b>	72 GRAMS
<b>SIZE:</b>	40 cm length x 7 cm
<b>STONE WT:</b>	75 CARATS
<b>DIAMOND WT:</b>	3.7 CARATS



# EXTREMELY BEAUTIFUL NECKLACE MADE WITH EMERALDS, BLUE SAPPHIRE AND DIAMONDS

## PRODUCT DESCRIPTION

<b>STYLE:</b>	VN2068
<b>METAL:</b>	STERLING SILVER
<b>GROSS WT:</b>	52 GRAMS
<b>SIZE:</b>	6.4 x 4.3 cm
<b>STONE WT:</b>	51.50 CARATS
<b>DIAMOND WT:</b>	1.77 CARATS





# CARVED EMERALDS, BLUE SAPPHIRES AND RUBIES NECKLACE

## PRODUCT DESCRIPTION

<b>STYLE:</b>	VN2071
<b>METAL:</b>	STERLING SILVER
<b>GROSS WT:</b>	36 GRAMS
<b>STONE WT:</b>	86 CARATS
<b>DIAMOND WT:</b>	0.36 CARATS



# ABOUT US!

A Collection as unique as  
**You!**



ANTIQA IS AN INITIATIVE OF MRS. BEENU KATHURIA TO BRING THE MODERN LOOKING ANTIQUE JEWELRY AT YOUR DOORSTEP AT SUCH PRICE THAT WON'T HURT YOUR POCKET OR BREAK YOUR BUDGET. THE EXPERT TEAM CRAFTSMEN AT OUR WORKSTATION WORK WITH THEIR EXPERTISE AND DEDICATION FOR EACH AND EVERY PIECE OF JEWELRY. ALL OUR JEWELRY PRODUCTS ARE WELL DESIGNED AND HAVE A DECENT FINISHING THAT MAKES THEM A PREMIUM LOOK. THE THING THAT MAKES THE JEWELRY OF ANTIQA, A BIT CLASSY THAN OTHER ONLINE RETAIL STORES IS, ALL OUR DESIGNS ARE EXCLUSIVELY HANDCRAFTED AND FROM OUR EXPERTS. IT MEANS WE DON'T USE MACHINES TO MAKE THE REPLICATIONS OF JEWELRY INSTEAD OF THAT, OUR PIECES OF JEWELRY ARE HANDCRAFTED AND DEvised BY HUMANS. WE BELIEVE IN CREATING MASTERPIECES AND WORK DAY AND NIGHT WITH DEVOTION AND HARD-WORK TO MAKE THE PIECES OF JEWELRY THAT CAN ADORN YOU WITH ELEGANCE AND DIGNITY. CHECK OUT OUR LATEST COLLECTION OF HANDCRAFTED JEWELRY AND SEE THE DIFFERENCE.

Antiqua  
*Exclusively Handcrafted*



# CONTACT US



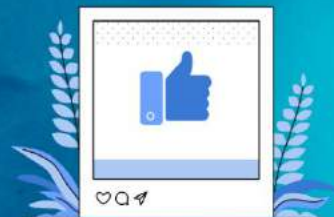
## CONTACT US

52, 3RD FLOOR SOUTH PATEL NAGAR NEW DELHI-110008  
INDIA

PHONE - +919811217464

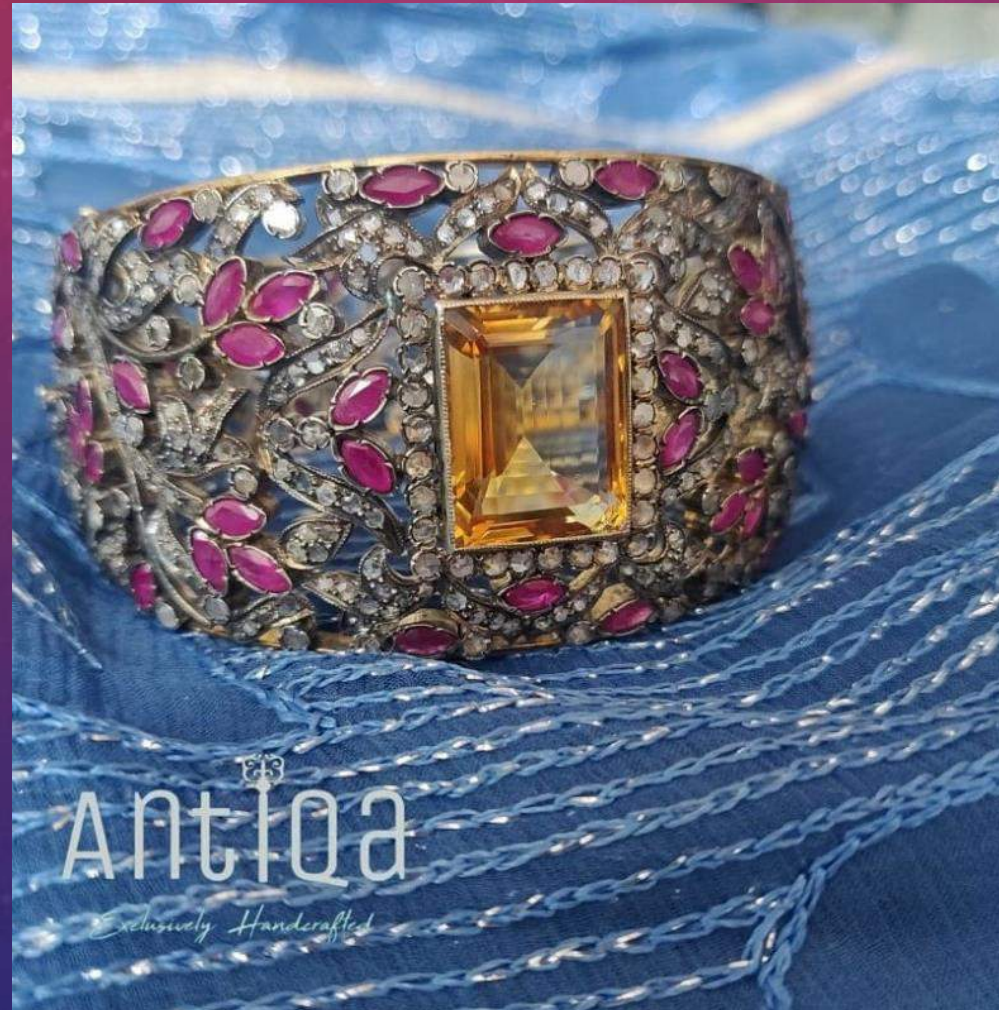
EMAIL-ANTIQA699@GMAIL.COM

WEBSITE-<https://www.antiqua.in>



# BEST BRACELET COLLECTION

## ANTIQA HANDCRAFTED





# HANDCRAFTED BANGLE BRACELET STUDDED WITH TOP QUALITY CITRINE, RUBY AND MELLE DIAMONDS

## PRODUCT DESCRIPTION

<b>STYLE:</b>	VB2275
<b>METAL:</b>	STERLING SILVER
<b>GROSS WT:</b>	72 GRAMS
<b>SIZE:</b>	4 cms width
<b>STONE WT:</b>	30.25 CARATS
<b>DIAMOND WT:</b>	6.26 CARATS



# HANDCRAFTED BRACELET STUDDED WITH RUBY, TANZANITE AND MELLE DIAMONDS

## PRODUCT DESCRIPTION

<b>STYLE:</b>	VB2278
<b>METAL:</b>	STERLING SILVER
<b>GROSS WT:</b>	28 GRAMS
<b>SIZE:</b>	2.9 CMS Width
<b>STONE WT:</b>	18.23 CARATS
<b>POLKI WT:</b>	1.10 CARATS





# HANDCRAFTED BRACELET MADE WITH NATURAL BLUE SAPPHIRE & MELLE DIAMONDS

## PRODUCT DESCRIPTION

<b>STYLE:</b>	VB2287
<b>METAL:</b>	STERLING SILVER
<b>GROSS WT:</b>	14 GRAMS
<b>SIZE:</b>	1 cms width
<b>STONE WT:</b>	9.03 CARATS
<b>DIAMOND WT:</b>	0.70 CARATS



# BRACELET STUDDED WITH RUBY, CABOCHON AND MELLE DIAMONDS

## PRODUCT DESCRIPTION

<b>STYLE:</b>	VB2274
<b>METAL:</b>	STERLING SILVER
<b>GROSS WT:</b>	20.5 GRAMS
<b>SIZE:</b>	2.5 cms width
<b>STONE WT:</b>	11 CARATS
<b>DIAMOND WT:</b>	1.30 CARATS





# HANDCRAFTED BRACELET STUDDED WITH EMERALD, BLUE SAPPHIRE AND MELLE DIAMONDS

## PRODUCT DESCRIPTION

<b>STYLE:</b>	VB2278
<b>METAL:</b>	STERLING SILVER
<b>GROSS WT:</b>	33 GRAMS
<b>SIZE:</b>	2.5 cms width
<b>STONE WT:</b>	18 CARATS
<b>DIAMOND WT:</b>	1.31 CARATS



# HANDCRAFTED BANGLE BRACELET STUDDED WITH AQUAMARINE, BLUE SAPPHIRE AND MELLE DIAMONDS.

## PRODUCT DESCRIPTION

<b>STYLE:</b>	VB279
<b>METAL:</b>	STERLING SILVER
<b>GROSS WT:</b>	20 GRAMS
<b>SIZE:</b>	1.8 cms width
<b>STONE WT:</b>	10.05 CARATS
<b>DIAMOND WT:</b>	0.88 CARATS





# BRACELET STUDDED WITH BLUE SAPPHIRE AND MELLE DIAMONDS

## PRODUCT DESCRIPTION

<b>STYLE:</b>	VB2243
<b>METAL:</b>	STERLING SILVER
<b>GROSS WT:</b>	31 GRAMS
<b>SIZE:</b>	4 cm wide x 40cms length (adjustable)
<b>STONE WT:</b>	12 CARATS
<b>DIAMOND WT:</b>	0.35 CARATS



**AntiqA**  
*Exclusively Handcrafted*

# THE STUDED BRACELET SHINES WITH RUBIES, EMERALDS AND KYANITE STONES ALONG WITH POLKI DIAMOND AND MELLE

## PRODUCT DESCRIPTION

<b>STYLE:</b>	VB2237
<b>METAL:</b>	STERLING SILVER
<b>GROSS WT:</b>	84.7 GRAMS
<b>SIZE:</b>	18.5 x 3.3 cms
<b>STONE WT.</b>	25.5 CARATS
<b>POLKI DIAMOND WT:</b>	7.5 CARATS

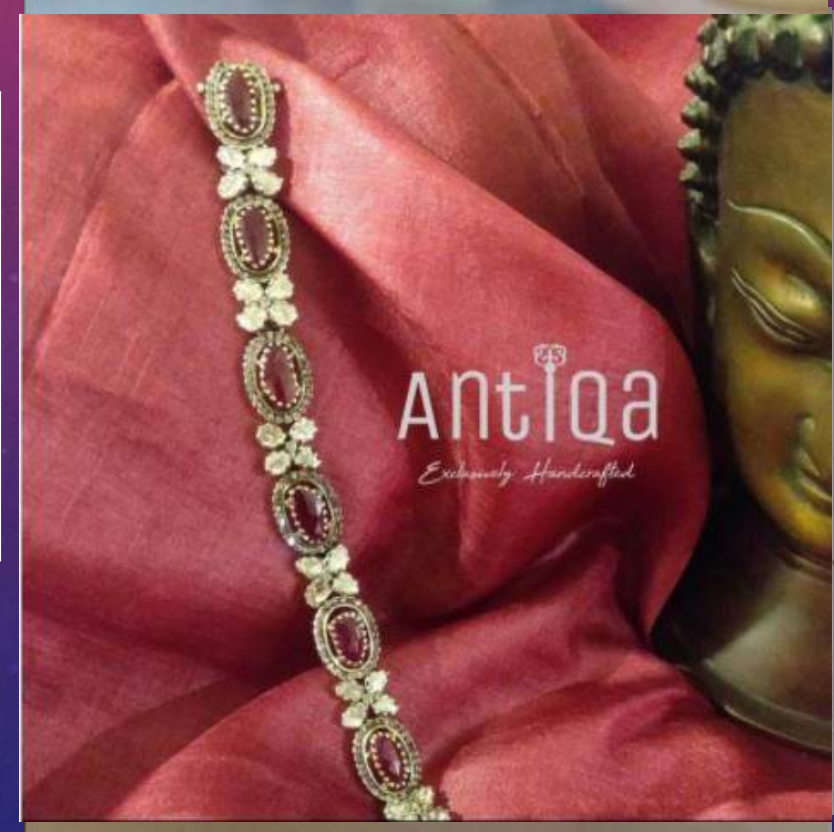




# BRACELET STUDDED WITH RUBIES, POLKI AND MELLE DIAMONDS

## PRODUCT DESCRIPTION

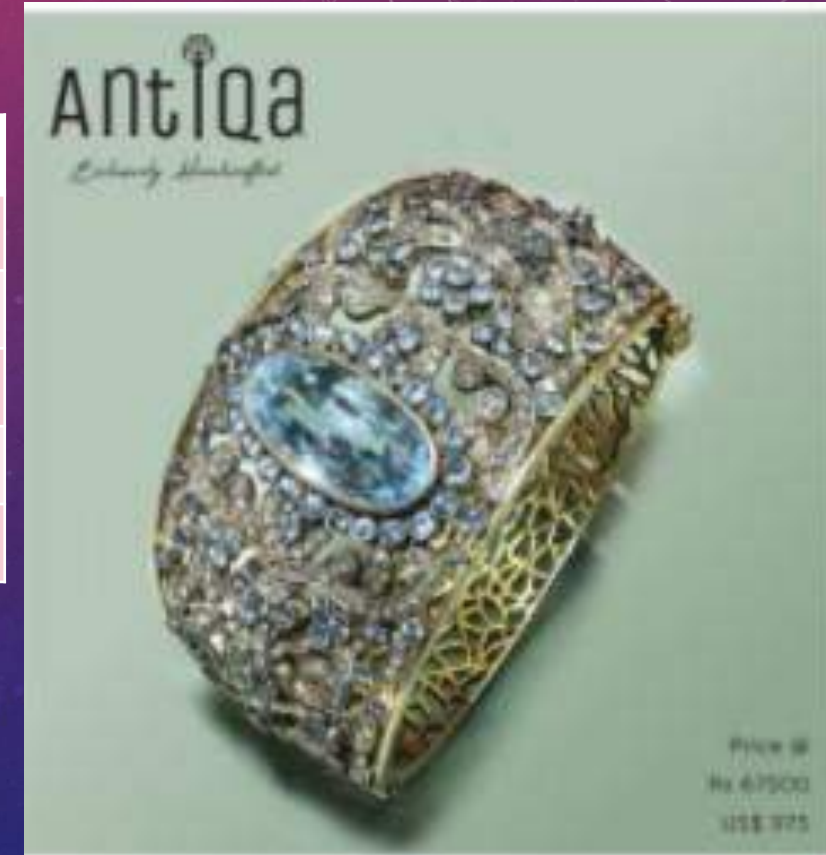
<b>STYLE:</b>	VB2230
<b>METAL:</b>	STERLING SILVER
<b>GROSS WT:</b>	23.5 GRAMS
<b>SIZE</b>	18.5 cm length
<b>STONE WT:</b>	6.58 CARATS
<b>DIAMOND WT:</b>	3.58 CARATS



# VICTORIAN BRACELET STUDDED WITH BLUE TOPAZ, BLUE SAPPHIRE AND DIAMONDS

## PRODUCT DESCRIPTION

<b>STYLE:</b>	VB2087
<b>METAL:</b>	STERLING SILVER
<b>GROSS WT:</b>	67 GRAMS
<b>SIZE:</b>	7 cm length x 4 cms wide
<b>STONE WT:</b>	45 CARATS
<b>DIAMOND WT:</b>	2.70 CARATS





# VINTAGE STYLE BRACELET STUDDED WITH RUBY, TURQUOISE AND DIAMONDS

## PRODUCT DESCRIPTION

<b>STYLE:</b>	VB2176
<b>METAL:</b>	STERLING SILVER
<b>GROSS WT:</b>	40 GRAMS
<b>SIZE:</b>	2 cms width x 19 cms length
<b>STONE WT:</b>	39.36 CARATS
<b>DIAMOND WT:</b>	1.33 CARATS



# RUBY STONES PEARLS TO CREATE A GORGEOUS NATURAL LOOKING BRACELET

## PRODUCT DESCRIPTION

<b>STYLE:</b>	VB1913
<b>METAL:</b>	STERLING SILVER
<b>GROSS WT:</b>	75 GRAMS
<b>SIZE:</b>	18.5 x 3.5 cms
<b>STONE WT:</b>	148 CARATS
<b>DIAMOND WT:</b>	0.68 CARATS





# BRACELET MADE OF ROUND EMERALDS LINED WITH BEAUTIFUL DIAMONDS

## PRODUCT DESCRIPTION

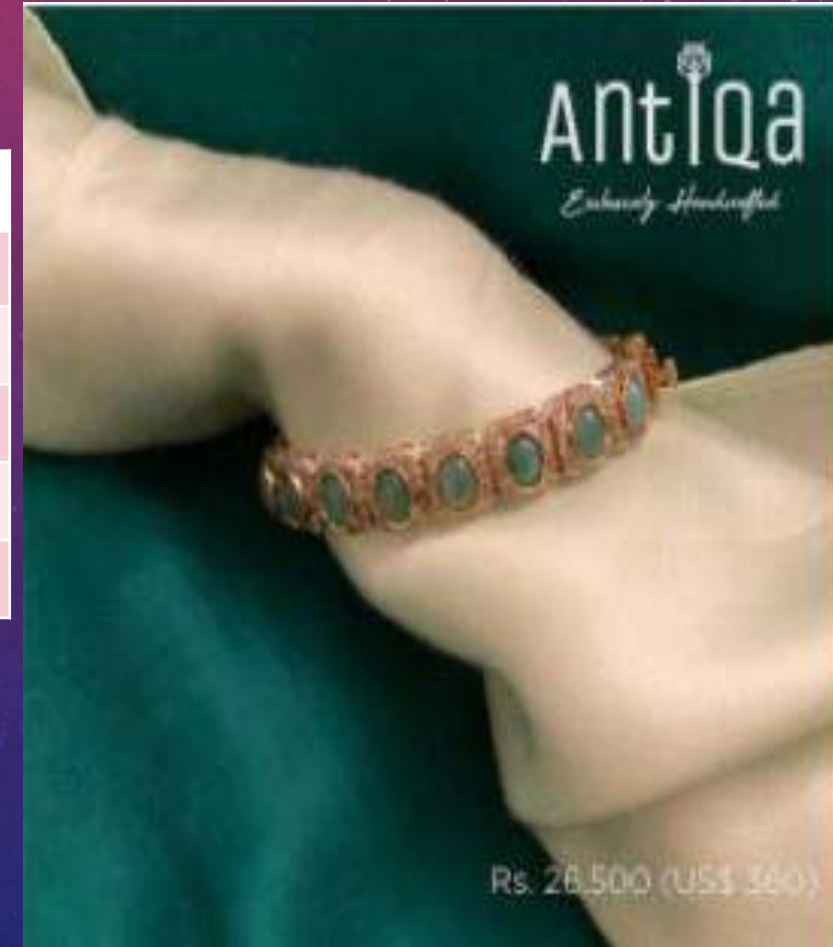
<b>STYLE:</b>	VB1909
<b>METAL:</b>	STERLING SILVER
<b>GROSS WT:</b>	60 GRAMS
<b>SIZE:</b>	19 cms length x 2.2 cm width
<b>STONE WT:</b>	43.98 CARATS
<b>DIAMOND WT:</b>	2.70 CARATS



# VINTAGE STYLE CUFF BRACELET STUDED WITH LARGE EMERALDS & CHAMPAGNE DIAMONDS ALONG WITH GOLD PLATING

## PRODUCT DESCRIPTION

<b>STYLE:</b>	VB2080
<b>METAL:</b>	STERLING SILVER
<b>GROSS WT:</b>	54 GRAMS
<b>SIZE:</b>	9.0 x 6.5 cms
<b>STONE WT:</b>	164 CARATS
<b>DIAMOND WT:</b>	1.45 CARATS





# MUGHAL STYLE POLKI & DIAMOND OPENABLE BANGLE

## PRODUCT DESCRIPTION

<b>STYLE:</b>	VB2084
<b>METAL:</b>	STERLING SILVER
<b>GROSS WT:</b>	78 GRAMS
<b>SIZE:</b>	7 cms diameter x 2 cms width
<b>DIAMOND WT:</b>	12.60 CARATS



# EXCLUSIVELY HANDCRAFTED VICTORIAN STYLE BRACELET STUDDED WITH AQUAMARINE, BLUE SAPPHIRE & DIAMONDS.

## PRODUCT DESCRIPTION

<b>STYLE:</b>	VB2089
<b>METAL:</b>	STERLING SILVER
<b>GROSS WT:</b>	22 GRAMS
<b>SIZE:</b>	6 cms across x 2.5 cms wide
<b>STONE WT:</b>	13 CARATS
<b>DIAMOND WT:</b>	0.85 CARATS





EXCLUSIVELY HANDCRAFTED BRACELET BEAUTIFULLY STUDDED WITH FLORITE,  
BLUE SAPPHIRE & DIAMONDS.

## PRODUCT DESCRIPTION

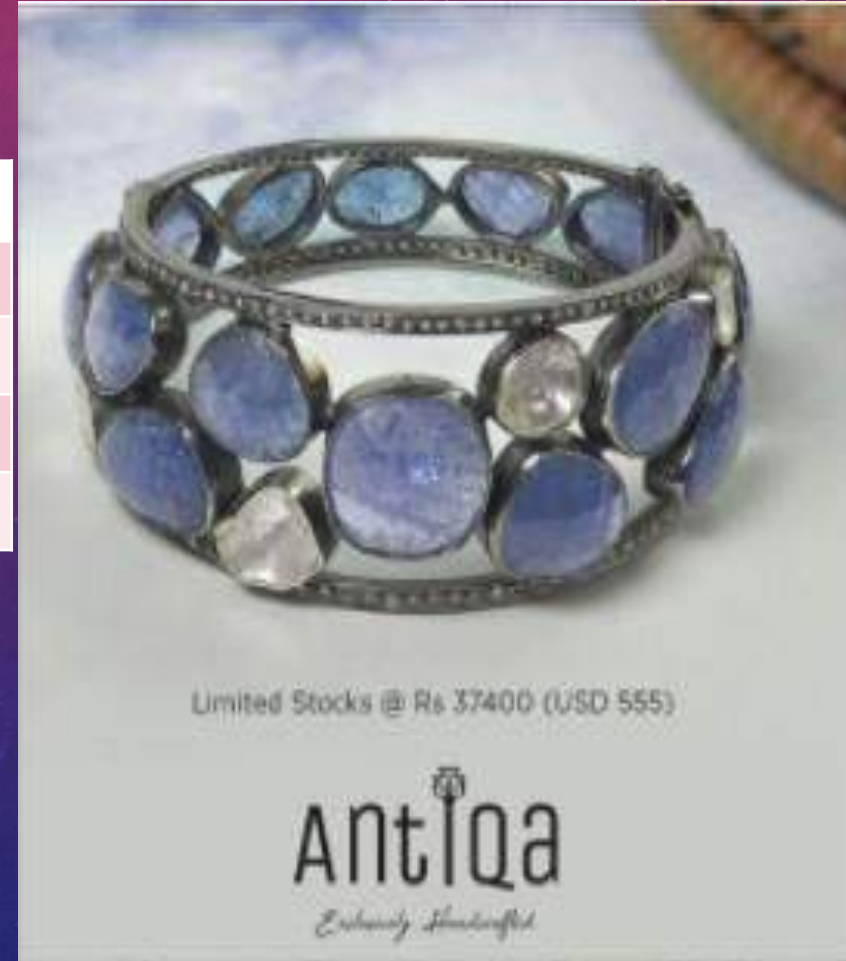
<b>STYLE:</b>	VB2091
<b>METAL:</b>	STERLING SILVER
<b>GROSS WT:</b>	21 GRAMS
<b>SIZE:</b>	6.5 cms x 3 cms wide
<b>STONE WT:</b>	9 CARATS
<b>DIAMOND WT:</b>	0.92 CARATS



# MODERN CONTEMPORARY STYLE BRACELET MADE WITH TANZANITE & POLKI DIAMONDS SPECIALLY FOR THE MODERN WOMAN.

## PRODUCT DESCRIPTION

<b>STYLE:</b>	VB2131
<b>METAL:</b>	STERLING SILVER
<b>GROSS WT:</b>	62 GRAMS
<b>SIZE:</b>	7.5 x 3 cms
<b>STONE WT:</b>	66 CARATS





# MUGHAL STYLE MADE WITH GOLD KUNDAN, NATURAL POLKI, EMERALDS, RUBIES & FRESHWATER

## PRODUCT DESCRIPTION

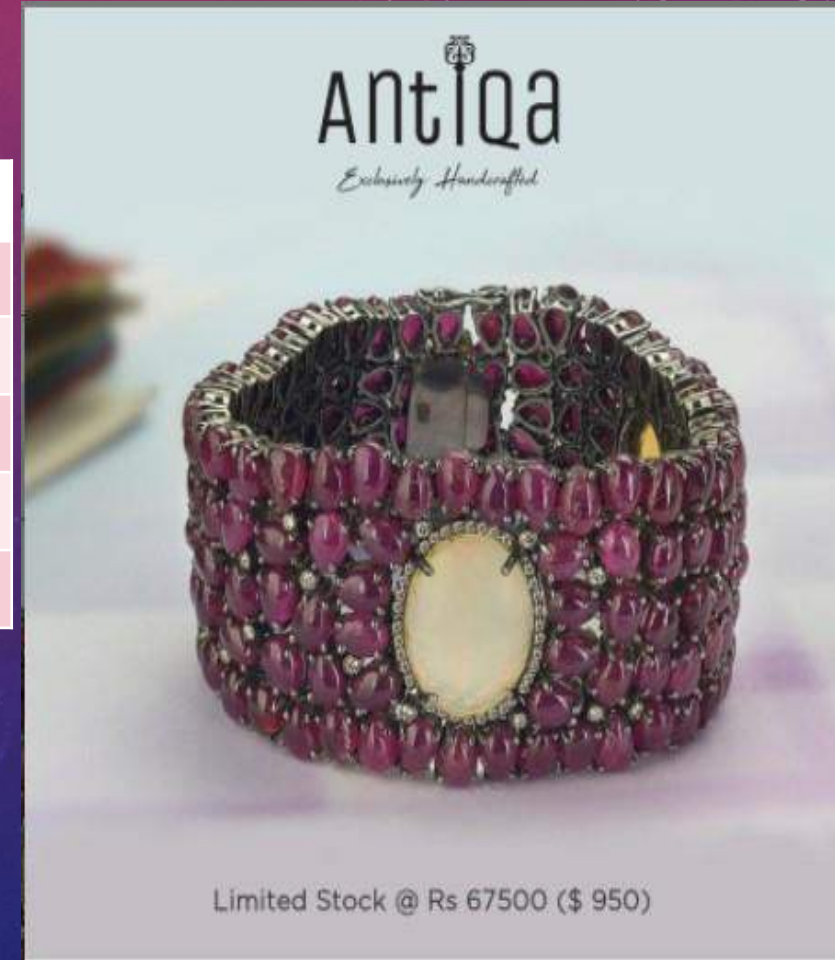
<b>STYLE:</b>	VB2141
<b>METAL:</b>	STERLING SILVER
<b>GROSS WT:</b>	38 GRAMS
<b>SIZE:</b>	7 cm wide x 48 cms length
<b>STONE WT:</b>	6.50 CARATS
<b>DIAMOND WT:</b>	1.10 CARATS



# VINTAGE BRACELET STUDDED WITH RUBY AND OPALS ALONG WITH DIAMONDS

## PRODUCT DESCRIPTION

<b>STYLE:</b>	VB2102
<b>METAL:</b>	STERLING SILVER
<b>GROSS WT:</b>	112 GRAMS
<b>SIZE:</b>	18.5 cms length x 3.5 cms wide
<b>STONE WT:</b>	180 CARATS
<b>DIAMOND WT:</b>	2.35 CARATS





# ABOUT US!

A Collection as unique as

**You!**



ANTIQA IS AN INITIATIVE OF MRS. BEENU KATHURIA TO BRING THE MODERN LOOKING ANTIQUE JEWELRY AT YOUR DOORSTEP AT SUCH PRICE THAT WON'T HURT YOUR POCKET OR BREAK YOUR BUDGET. THE EXPERT TEAM CRAFTSMEN AT OUR WORKSTATION WORK WITH THEIR EXPERTISE AND DEDICATION FOR EACH AND EVERY PIECE OF JEWELRY. ALL OUR JEWELRY PRODUCTS ARE WELL DESIGNED AND HAVE A DECENT FINISHING THAT MAKES THEM A PREMIUM LOOK. THE THING THAT MAKES THE JEWELRY OF ANTIQA, A BIT CLASSY THAN OTHER ONLINE RETAIL STORES IS, ALL OUR DESIGNS ARE EXCLUSIVELY HANDCRAFTED AND FROM OUR EXPERTS. IT MEANS WE DON'T USE MACHINES TO MAKE THE REPLICATIONS OF JEWELRY INSTEAD OF THAT, OUR PIECES OF JEWELRY ARE HANDCRAFTED AND DEvised BY HUMANS. WE BELIEVE IN CREATING MASTERPIECES AND WORK DAY AND NIGHT WITH DEVOTION AND HARD-WORK TO MAKE THE PIECES OF JEWELRY THAT CAN ADORN YOU WITH ELEGANCE AND DIGNITY. CHECK OUT OUR LATEST COLLECTION OF HANDCRAFTED JEWELRY AND SEE THE DIFFERENCE.

Antiqua  
*Exclusively Handcrafted*

# CONTACT US



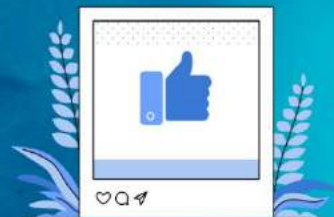
## CONTACT US

52, 3RD FLOOR SOUTH PATEL NAGAR NEW DELHI-110008  
INDIA

PHONE - +919811217464

EMAIL-ANTIQA699@GMAIL.COM

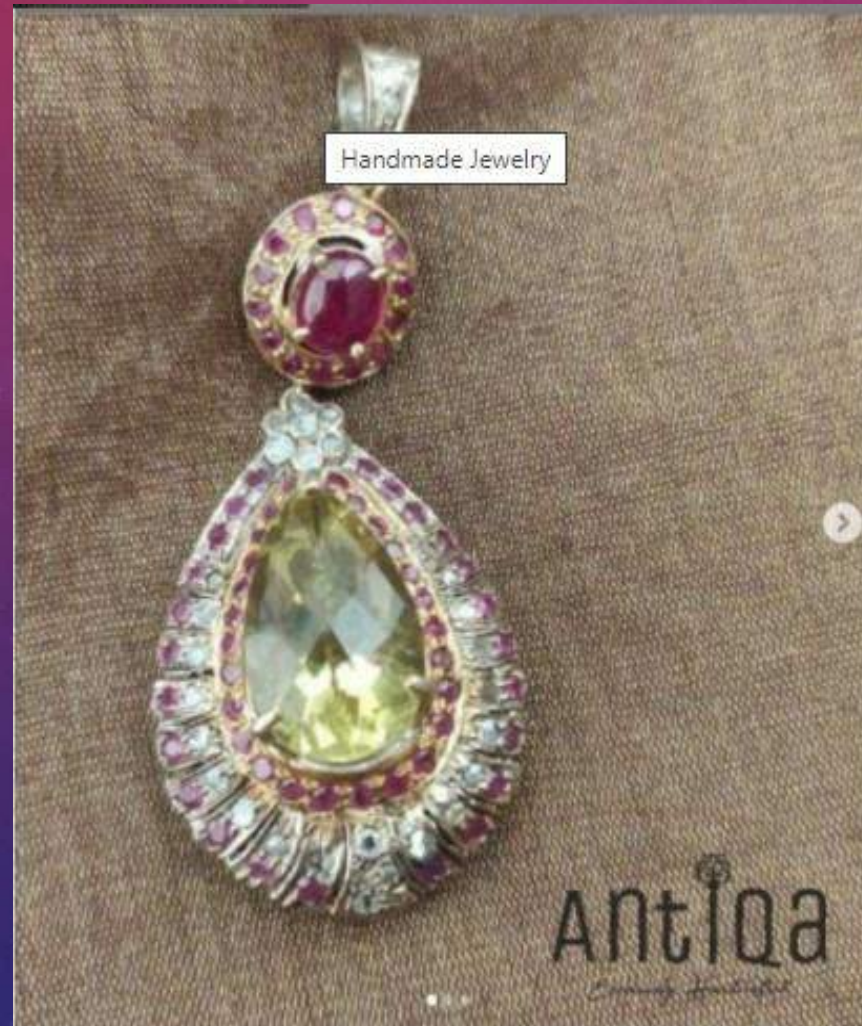
WEBSITE-<https://www.antiqua.in>





# BEST PENDANTS COLLECTION

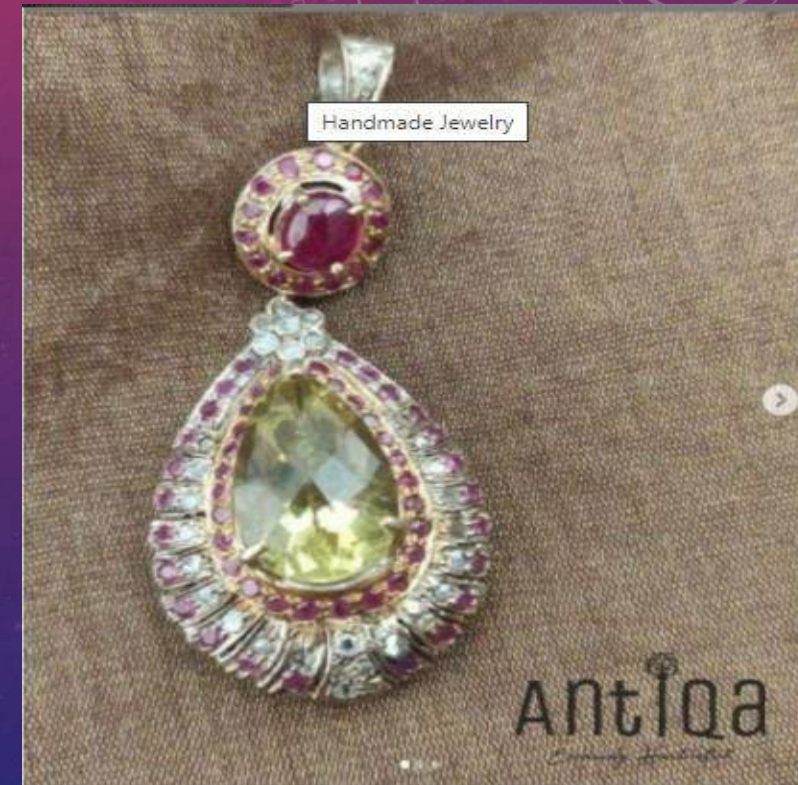
## ANTIQA HANDCRAFTED



# HANDCRAFTED PENDANT STUDDED WITH LEMON QUARTZ, RUBY AND MELLE DIAMONDS

## PRODUCT DESCRIPTION

<b>STYLE:</b>	VP2296
<b>METAL:</b>	STERLING SILVER
<b>GROSS WT:</b>	14 GRAMS
<b>SIZE:</b>	6.5 x 2.8 cms
<b>STONE WT:</b>	18.20 CARATS
<b>DIAMOND WT:</b>	0.28 CARATS





# HANDCRAFTED PENDANT STUDDED WITH BLUE AQUAMARINE, BLUE SAPPHIRE AND MELLE DIAMONDS

## PRODUCT DESCRIPTION

<b>STYLE:</b>	VP2295
<b>METAL:</b>	STERLING SILVER
<b>GROSS WT:</b>	14 GRAMS
<b>SIZE:</b>	7.5 x 3.2 cms
<b>STONE WT:</b>	10.5 CARATS
<b>POLKI WT:</b>	0.65 CARATS



# PENDANT STUDDED WITH NATURAL CITRINE, RUBY & MELLE DIAMONDS

## PRODUCT DESCRIPTION

<b>STYLE:</b>	VP2290
<b>METAL:</b>	STERLING SILVER
<b>GROSS WT:</b>	14.5 GRAMS
<b>SIZE:</b>	5 X 3 cms
<b>STONE WT:</b>	23 CARATS
<b>DIAMOND WT:</b>	1.45 CARATS





# HANDCRAFTED PENDANT MADE WITH NATURAL AMETHYST & MELLE DIAMONDS

## PRODUCT DESCRIPTION

<b>STYLE:</b>	VP2288
<b>METAL:</b>	STERLING SILVER
<b>GROSS WT:</b>	10.20 GRAMS
<b>SIZE:</b>	5.7 x 4.5 cms
<b>STONE WT:</b>	15 CARATS
<b>DIAMOND WT:</b>	0.75 CARATS



# HANDMADE PENDANT MADE WITH EXCLUSIVE AMETHYST, BLUE SAPPHIRE & MELLE DIAMONDS.

## PRODUCT DESCRIPTION

<b>STYLE:</b>	VP2277
<b>METAL:</b>	STERLING SILVER
<b>GROSS WT:</b>	8 GRAMS
<b>SIZE:</b>	4 x 2.7 cms
<b>STONE WT:</b>	9.5 CARATS
<b>DIAMOND WT:</b>	0.70 CARATS





# HANDCRAFTED PENDANT MADE WITH NATURAL PRASIOLITE, EMERALDS, BLUE SAPPHIRE & MELLE DIAMONDS

## PRODUCT DESCRIPTION

<b>STYLE:</b>	VP2286
<b>METAL:</b>	STERLING SILVER
<b>GROSS WT:</b>	8.4 GRAMS
<b>SIZE:</b>	4.5 x 3 cms
<b>STONE WT:</b>	12.35 CARATS
<b>DIAMOND WT:</b>	0.55 CARATS



# PENDANT STUDDED WITH NATURAL OPAL, EMERALD, BLUE SAPPHIRE AND MELLE DIAMONDS

## PRODUCT DESCRIPTION

<b>STYLE:</b>	VP2285
<b>METAL:</b>	STERLING SILVER
<b>GROSS WT:</b>	27 GRAMS
<b>SIZE:</b>	7x5 cms
<b>STONE WT:</b>	23 CARATS
<b>DIAMOND WT:</b>	3.25 CARATS





# HANDCRAFTED PENDANT NATURAL LEMON QUARTZ, RUBY AND MELLE DIAMONDS

## PRODUCT DESCRIPTION

<b>STYLE:</b>	VP2284
<b>METAL:</b>	STERLING SILVER
<b>GROSS WT:</b>	6 GRAMS
<b>SIZE:</b>	3.8 x 2.3 cms
<b>STONE WT:</b>	6.74 CARATS
<b>DIAMOND WT:</b>	1.00 CARATS



# HANDCRAFTED PENDANT STUDDED WITH CHALCEDONY, BLUE AND WHITE SAPPHIRE

## PRODUCT DESCRIPTION

<b>STYLE:</b>	VP2283
<b>METAL:</b>	STERLING SILVER
<b>GROSS WT:</b>	9.40 GRAMS
<b>SIZE:</b>	5 x 2.8 cms
<b>STONE WT:</b>	7.08 CARATS
<b>DIAMOND WT:</b>	0.00 CARATS

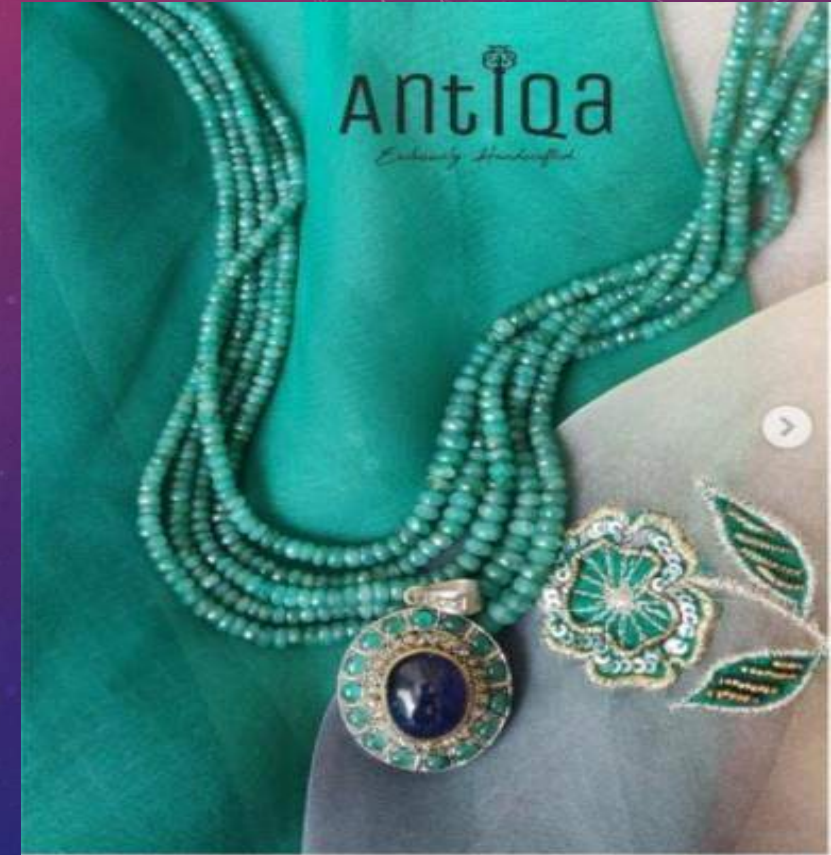




# HANDCRAFTED PENDANT STUDDED WITH NATURAL TANZANITE, EMERALD AND MELLE DIAMONDS.

## PRODUCT DESCRIPTION

<b>STYLE:</b>	VP2281
<b>METAL:</b>	STERLING SILVER
<b>GROSS WT:</b>	14 GRAMS
<b>SIZE:</b>	4.1 x 2.8 cms
<b>STONE WT:</b>	20 CARATS
<b>DIAMOND WT:</b>	0.75 CARATS



# HANDCRAFTED PENDANT STUDDED WITH CARVED BLUE SAPPHIRE, RUBY AND MELL DIAMONDS

## PRODUCT DESCRIPTION

<b>STYLE:</b>	VP2275
<b>METAL:</b>	STERLING SILVER
<b>GROSS WT:</b>	27.5 GRAMS
<b>SIZE:</b>	5.7 cm diameter
<b>STONE WT:</b>	45 CARATS
<b>DIAMOND WT:</b>	2.50 CARATS





# PENDANT STUDDED WITH RUBY, PEARLS, BLUE SAPPHIRE, TURQUOISE, BLUE TOPAZ AND KYANITE

## PRODUCT DESCRIPTION

<b>STYLE:</b>	VP2272
<b>METAL:</b>	STERLING SILVER
<b>GROSS WT:</b>	46 GRAMS
<b>SIZE:</b>	7 x 5.5 cms
<b>STONE WT:</b>	29 CARATS
<b>DIAMOND WT:</b>	0.00 CARATS



# PENDANT STUDDED WITH RUBY CARVED AND ETHIOPIAN OPAL

## PRODUCT DESCRIPTION

<b>STYLE:</b>	VR2273
<b>METAL:</b>	STERLING SILVER
<b>GROSS WT:</b>	18.5 GRAMS
<b>SIZE:</b>	5.0 x 2.7 cms
<b>STONE WT:</b>	38 CARATS
<b>DIAMOND WT:</b>	0.00 CARATS





# PENDANT STUDDED WITH AMETHYST, TURQUOISE AND MELLE DIAMONDS.

## PRODUCT DESCRIPTION

<b>STYLE:</b>	VP2267
<b>METAL:</b>	STERLING SILVER
<b>GROSS WT:</b>	9 GRAMS
<b>SIZE:</b>	4.6 x 2.6 cms
<b>STONE WT:</b>	11.40 CARATS
<b>DIAMOND WT:</b>	0.85 CARATS



# PENDANT STUDDED WITH RUBY, EMERALD AND DIAMOND

## PRODUCT DESCRIPTION

<b>STYLE:</b>	VP2263
<b>METAL:</b>	STERLING SILVER
<b>GROSS WT:</b>	10 GRAMS
<b>SIZE:</b>	5 x 4.3 cms
<b>STONE WT:</b>	4.7 CARATS
<b>DIAMOND WT:</b>	0.90 CARATS





# PENDANT STUDDED WITH AMETHYST, EMERALD AND MELLE DIAMONDS

## PRODUCT DESCRIPTION

<b>STYLE:</b>	VP2264
<b>METAL:</b>	STERLING SILVER
<b>GROSS WT:</b>	7.8 GRAMS
<b>SIZE:</b>	4 x 3.1 cms
<b>STONE WT:</b>	6.80 CARATS
<b>DIAMOND WT:</b>	0.90 CARATS



# MUGHAL STYLE PENDANT STUDDED WITH LEMON QUARTZ, EMERALD AND MELLE DIAMOND

## PRODUCT DESCRIPTION

<b>STYLE:</b>	VP2265
<b>METAL:</b>	STERLING SILVER
<b>GROSS WT:</b>	11.8 GRAMS
<b>SIZE:</b>	4.5 x 3.1 cms
<b>STONE WT:</b>	12.14 CARATS
<b>DIAMOND WT:</b>	1.23 CARATS

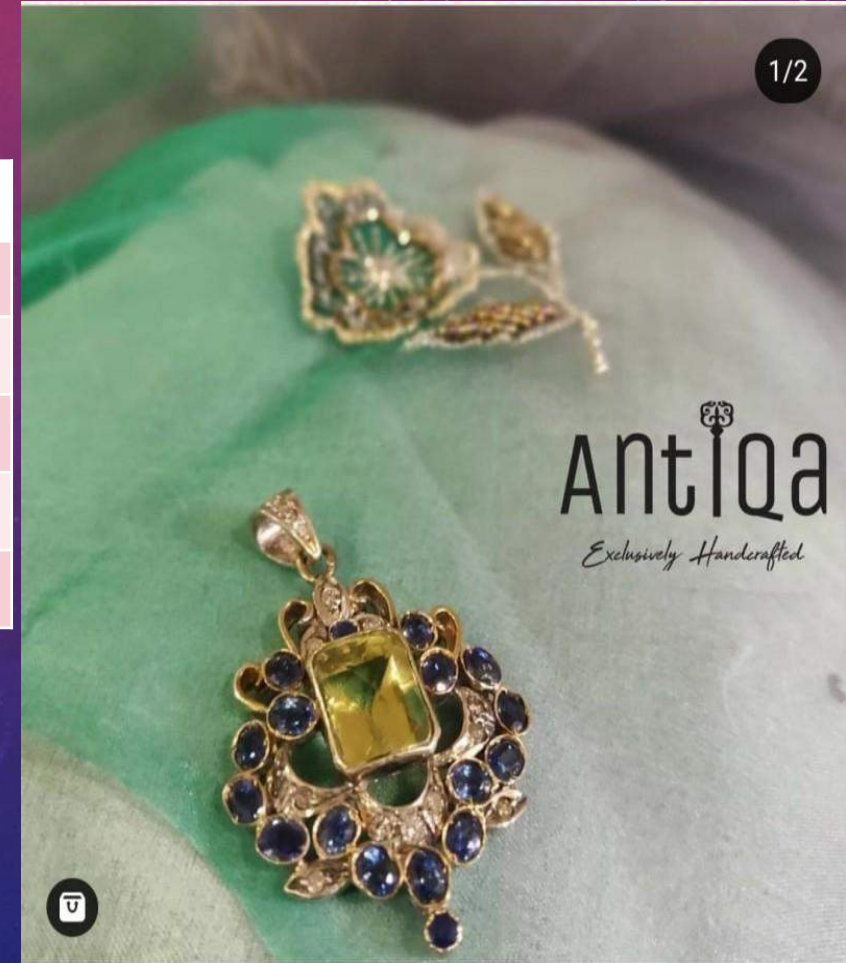




# PENDANT STUDDED WITH LEMON QUARTZ, BLUE SAPPHIRE AND MELLE DIAMONDS.

## PRODUCT DESCRIPTION

<b>STYLE:</b>	VP2250
<b>METAL:</b>	STERLING SILVER
<b>GROSS WT:</b>	10 GRAMS
<b>SIZE:</b>	5x 3.2 cms
<b>STONE WT:</b>	11.5 CARATS
<b>DIAMOND WT:</b>	0.50 CARATS



# VICTORIAN PENDANT STUDDED WITH CARVED RUBY, AND OPALS

## PRODUCT DESCRIPTION

<b>STYLE:</b>	VP2252
<b>METAL:</b>	STERLING SILVER
<b>GROSS WT:</b>	14.50 GRAMS
<b>SIZE:</b>	4 x 2.5cms
<b>STONE WT:</b>	14 CARATS
<b>DIAMOND WT:</b>	0.00 CARATS





# MODERN STYLE LABRADORITE & TOURMALINE PENDANT & A LABRADORITE STRING ALONG WITH MELLE DIAMONDS

## PRODUCT DESCRIPTION

<b>STYLE:</b>	VP2151
<b>METAL:</b>	STERLING SILVER
<b>GROSS WT:</b>	21 GRAMS
<b>SIZE:</b>	6.5 x 3.5 cms
<b>STONE WT:</b>	38 CARATS
<b>DIAMOND WT:</b>	1.05 CARATS



# PENDANT STUDDED WITH BLUE SAPPHIRE, EMERALDS AND MELLE DIAMONDS

## PRODUCT DESCRIPTION

<b>STYLE:</b>	VP2249
<b>METAL:</b>	STERLING SILVER
<b>GROSS WT:</b>	10 GRAMS
<b>SIZE:</b>	4 x 3 cms
<b>STONE WT:</b>	7.90 CARATS
<b>DIAMOND WT:</b>	0.95 CARATS





# PENDANT STUDDED WITH RARE CARVED EMERALD, RUBIES, BLUE SPAHIRE AND MELLE DIAMONDS

## PRODUCT DESCRIPTION

<b>STYLE:</b>	VP2246
<b>METAL:</b>	STERLING SILVER
<b>GROSS WT:</b>	11.50 GRAMS
<b>SIZE:</b>	4.5 x 3.3 cms
<b>STONE WT:</b>	5.25 CARATS
<b>DIAMOND WT:</b>	0.95 CARATS



# PENDANT STUDDED WITH PERSIAN TURQUOISE, RUBIES AND MELLE DIAMONDS.

## PRODUCT DESCRIPTION

<b>STYLE:</b>	VP2244
<b>METAL:</b>	STERLING SILVER
<b>GROSS WT:</b>	7 GRAMS
<b>SIZE:</b>	5 x 2 cms
<b>STONE WT:</b>	6.85 CARATS
<b>DIAMOND WT:</b>	0.95 CARATS



**Antiqua**  
*Exclusively Handcrafted*



# PENDANT STUDDED WITH CARVED ZAMBIAN EMERALD, BLUE SAPPHIRE AND MELLE DIAMONDS.

## PRODUCT DESCRIPTION

<b>STYLE:</b>	VP2239
<b>METAL:</b>	STERLING SILVER
<b>GROSS WT:</b>	7.4 GRAMS
<b>SIZE:</b>	4.2 cms x 3 cms
<b>STONE WT:</b>	5.40 CARATS
<b>DIAMOND WT:</b>	0.80 CARATS



# HANDCRAFTED PENDANT STUDDED WITH CARVED BLUE SAPPHIRE, RUBIES AND MELLE DIAMONDS

## PRODUCT DESCRIPTION

<b>STYLE:</b>	VP2236
<b>METAL:</b>	STERLING SILVER
<b>GROSS WT:</b>	13.2 GRAMS
<b>SIZE:</b>	4.5 cms x 4.0 cms
<b>STONE WT:</b>	18 CARATS
<b>DIAMOND WT:</b>	0.85 CARATS





# ABOUT US!

A Collection as unique as

**You!**



ANTIQA IS AN INITIATIVE OF MRS. BEENU KATHURIA TO BRING THE MODERN LOOKING ANTIQUE JEWELRY AT YOUR DOORSTEP AT SUCH PRICE THAT WON'T HURT YOUR POCKET OR BREAK YOUR BUDGET. THE EXPERT TEAM CRAFTSMEN AT OUR WORKSTATION WORK WITH THEIR EXPERTISE AND DEDICATION FOR EACH AND EVERY PIECE OF JEWELRY. ALL OUR JEWELRY PRODUCTS ARE WELL DESIGNED AND HAVE A DECENT FINISHING THAT MAKES THEM A PREMIUM LOOK. THE THING THAT MAKES THE JEWELRY OF ANTIQA, A BIT CLASSY THAN OTHER ONLINE RETAIL STORES IS, ALL OUR DESIGNS ARE EXCLUSIVELY HANDCRAFTED AND FROM OUR EXPERTS. IT MEANS WE DON'T USE MACHINES TO MAKE THE REPLICATIONS OF JEWELRY INSTEAD OF THAT, OUR PIECES OF JEWELRY ARE HANDCRAFTED AND DEVISED BY HUMANS. WE BELIEVE IN CREATING MASTERPIECES AND WORK DAY AND NIGHT WITH DEVOTION AND HARD-WORK TO MAKE THE PIECES OF JEWELRY THAT CAN ADORN YOU WITH ELEGANCE AND DIGNITY. CHECK OUT OUR LATEST COLLECTION OF HANDCRAFTED JEWELRY AND SEE THE DIFFERENCE.

Antiqua  
*Exclusively Handcrafted*

# CONTACT US



## CONTACT US

52, 3RD FLOOR SOUTH PATEL NAGAR NEW DELHI-110008  
INDIA

PHONE - +919811217464

EMAIL-ANTIQA699@GMAIL.COM

WEBSITE-<https://www.antiqua.in>

